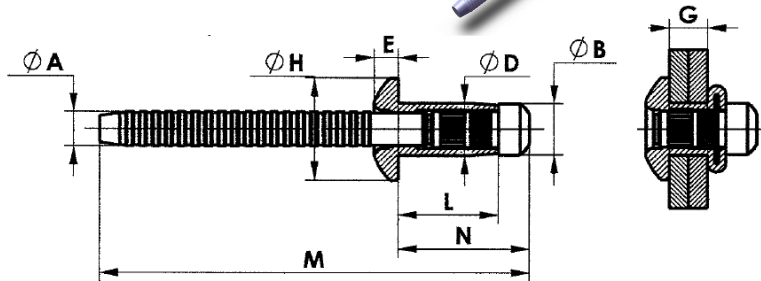
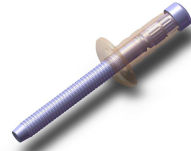


ORLOCK



Technical Data



SIZE	RIVET CODE	RIVET LENGTH L ± 0.3	GRIP RANGE G	A DIA. ± 0.08	B DIA. ± 0.10	D DIA. ± 0.06	E ± 0.3	H DIA. ± 0.4	M ± 2	N ± 0.5
5/16" 7.8m m	L78135 P	13.5	4.0-7.0	5.12	7.85	7.80	3.7	16.0	54	18.5
	L78165 P	16.5	7.0-10.0						57	21.5
	L78195 P	19.5	10.0-13.0						60	24.5
	L78225 P	22.5	13.0-16.0						63	27.5
	* L78255 P	25.5	16.0-19.0						66	30.5
	* L78285 P	28.5	19.0-22.0						69	33.5
	* L78315 P	31.5	22.0-25.0						72	36.5

RIVET CODE	SHEAR STRENGTH, N/kgf		TENSILE STRENGTH, N/kgf	
	min.	nom.	min.	nom.
L78135 P	13440 / 1370	13832 / 1410	7848 / 800	9124 / 930
L78165 P / L78315 P	14715 / 1500	15696 / 1600	7848 / 800	9124 / 930

BODY MATERIAL	LOW CARBON STEEL
MANDREL MATERIAL	CARBON STEEL
FINISH	ZINC COATED - Cr (VI) FREE PASSIVATION
RECOMMENDED HOLE SIZE	8.0 - 8.3 mm



Fastening Solutions

ORNIT BLIND RIVETS

Tel: +972 8 6610222, Fax: +972 8 6611380

www.ornit.com